



## **VENUE DETAILS AND TECHNICAL SPECIFICATIONS**



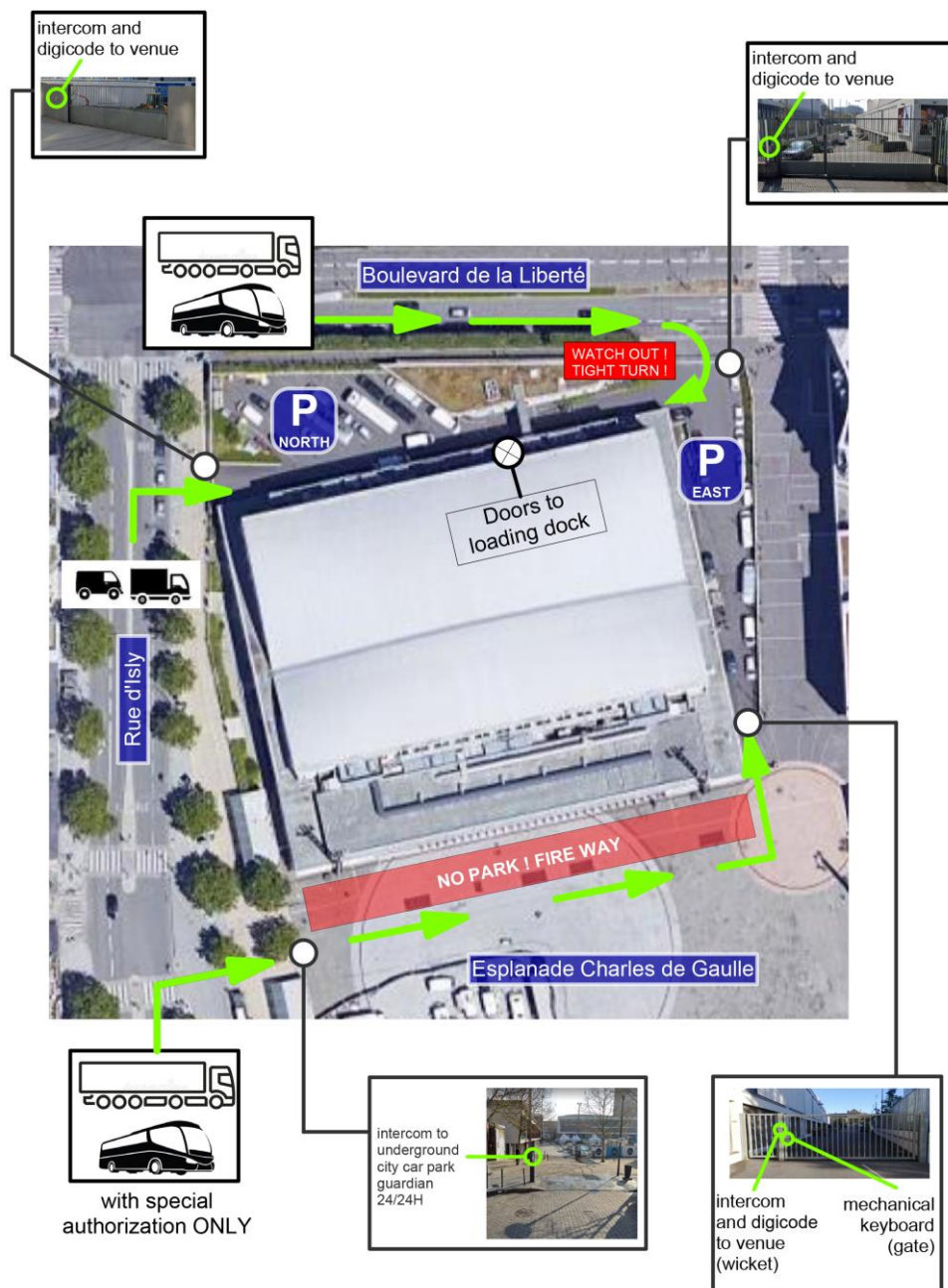
## PARKING

### Parking North

- 6 vehicles (like trucks or tourbus) can park here.
- Direct access to load-in gate. Electrical power is available in this area : 3x32A+N+G and 4x16A mono

### Parking East

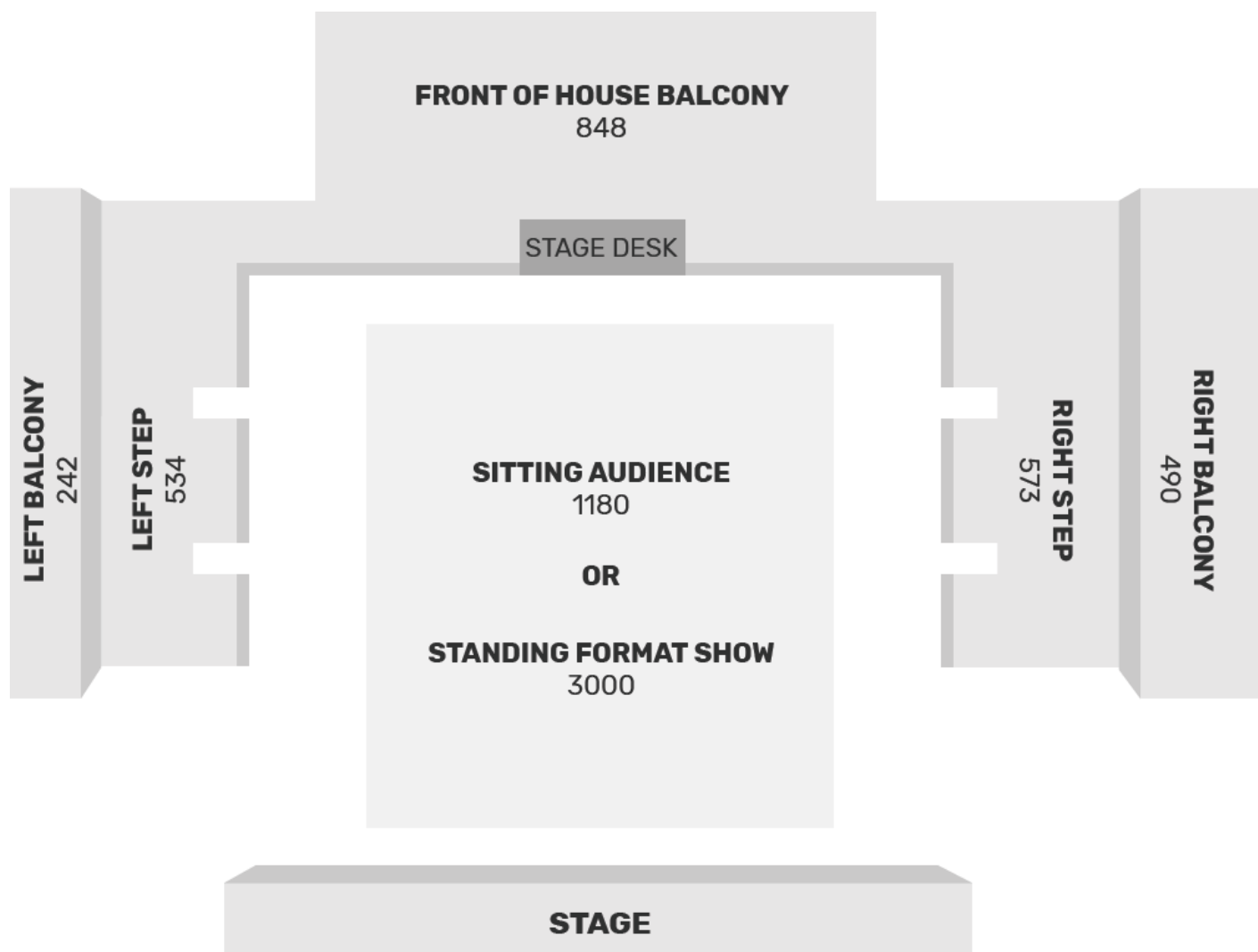
- This parking is used to be reserved for the 2nd venue « L'Étage » but, in case there is no show, it may be used as a second parking.
- You can park a bus or a truck and few cars. Electrical power available : 2x32A+N+G



**Audience**

- Seating : 3 000
- Standing / seating : 5 200

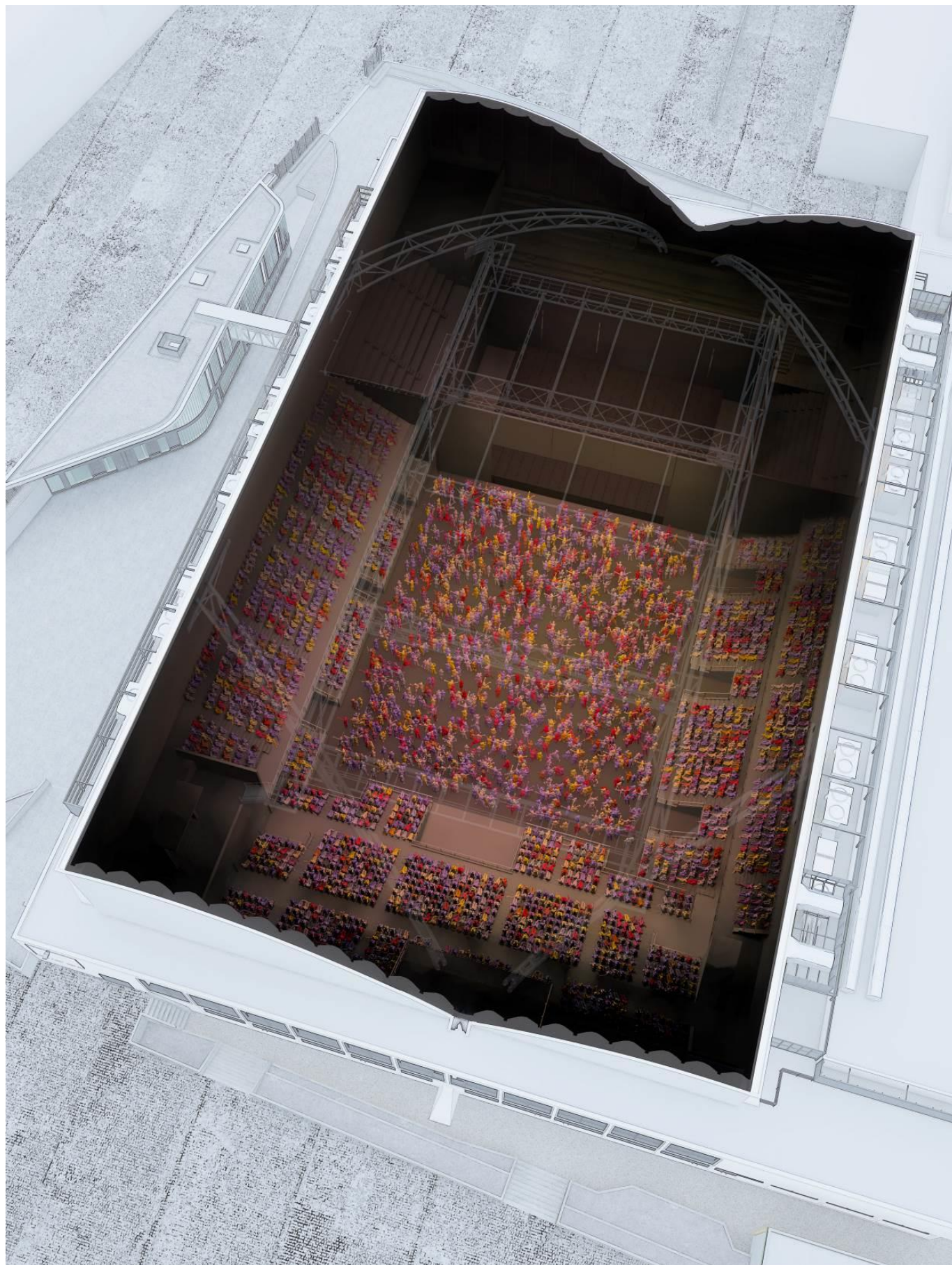
More details on the plan below



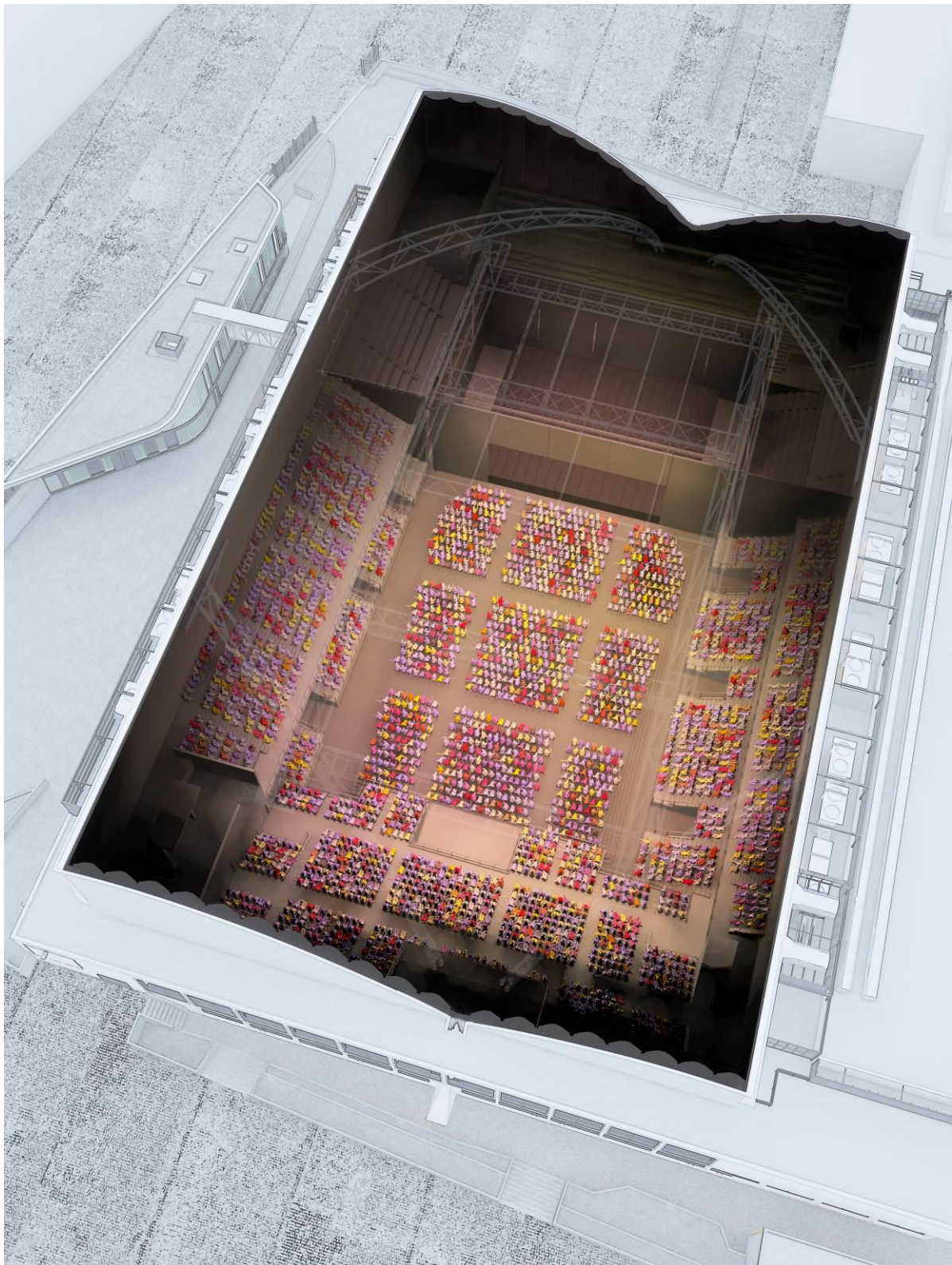
32 places are reserved as wheelchair spaces.

The indications of balconies and step number of seats depend on the scenic influence and the visibility on stage. These will be specified on a case by case basis.









Electrical curtains can make the venue into different configurations despite the expected audience

## STAGE

### Stage House

- Width 26.60m
- Depth 16.00m
- Height 11.90m

### Stage size

- Width 24.40m
- Depth 14.64m
- Height 1.40m

The stage is made by EUROPODIUM modular plates (1.22x1.22m, or 1.22x2.44m) with an adjustable height from 1m to 1.90m, and an admissible load of 600 daN/m<sup>2</sup>. It is provided with face masking, 2 stairs, and black security barriers

### Stage hanging

- 4 curtains of W6.00m x H8.00m (mostly used as backdrop)
- 2 curtains of W8.00m x H8.00m
- 8 curtains of W2.80m x H8.00
- 9 curtains of W7.00 x H1.00m (truss masking)

### Stage desk

A reserved area of W7.80m x D5.80m x H0.80m, located at the base of the step, at 30.00m from the frontstage. It is connected to the stage by 3 underground cable passages, each 0.30m diameter and 50.00m long.

## RIGGING

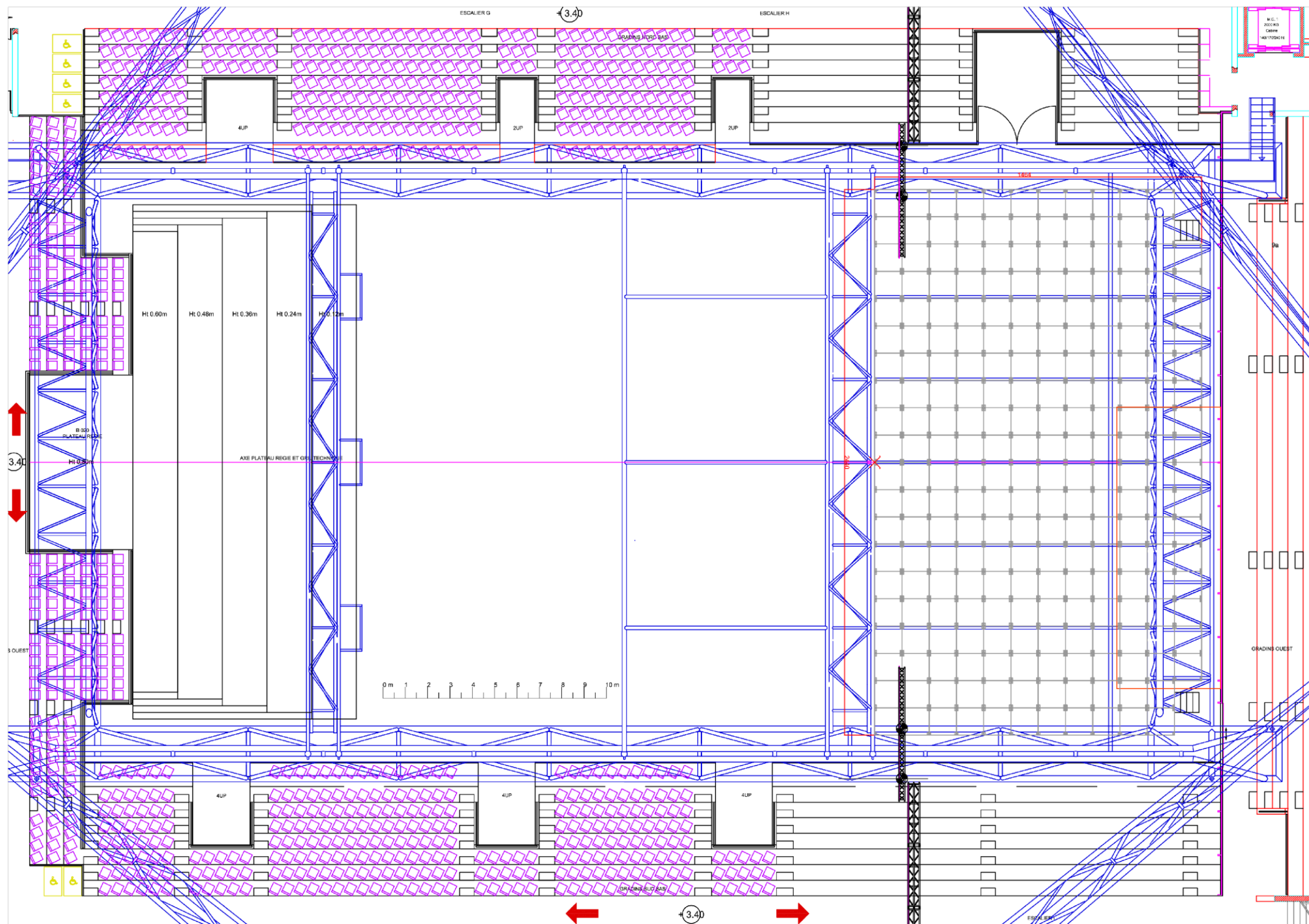
Lifting equipment available in the room, for hire :

### **Triangular truss section 500 (steel colored)**

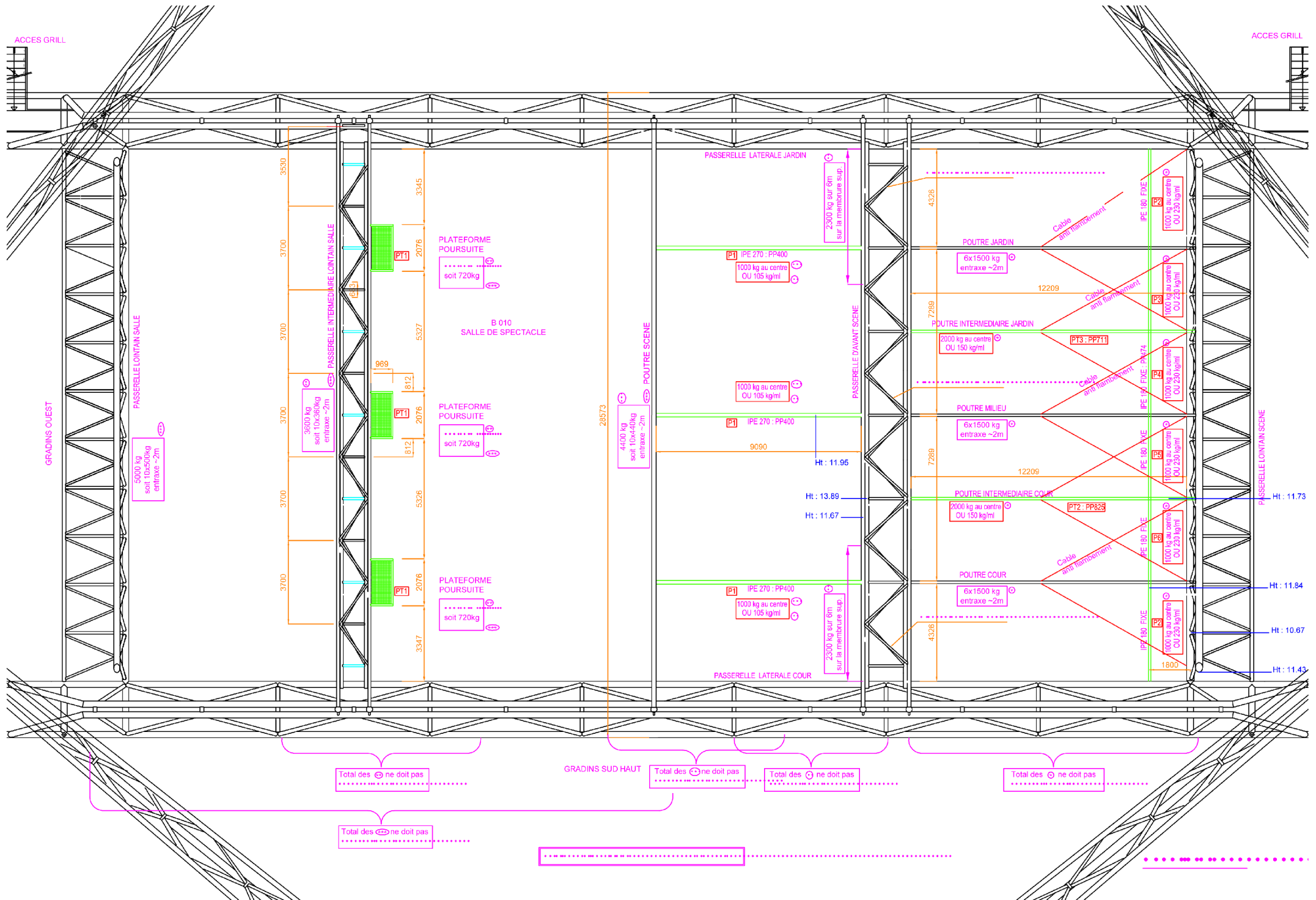
- 48 pieces 2.80m
- 8 pieces 1.40m
- 8 pieces 0.70m
- 8 4-cross pieces
- 4 « magical angles »
- 4 heavy bases

### **Square truss section 300 (black colored)**

- 2 pieces 4.00m
  - 6 pieces 3.00m
  - 9 pieces 2.00m
  - 3 pieces 1.00m
  - 4 self-supporting angles
  - 4 bases
- 
- 20 hoist 1T
  - 4 hoist 500kg
  - 2 control 8 hoists
  - 1 control 4 hoists
  - 1 control 2 hoists







## ELECTRICITY FACILITIES

3 follow spots spaces are located on the middle footbridge up to the audience, at 22m from the frontstage.

### Electrical power available

- 3x32A+N+G
- 1x32A mono
- 1x16A mono

Each space has an area of 2m<sup>2</sup> and equipped with an intercom link  
The footbridge is served by a freight elevator

### Electrical Power on backstage

- Power lighting : 3x 630A on cams
- Power-lock 120mm<sup>2</sup> 400A 3P+N+G
- 1x 250A 3P+N+G into terminal block
- 2x 125A 3P+N+G P17 sockets
- 2x 63A 3P+N+G P17 sockets
- 2x 32A 3P+N+G P17 sockets
- 4x 16A

### Power sound : 4x 160A on cams

- 1x 160A 3P+N+G into terminal block
- 1x 125A 3P+N+G P17 sockets
- 2x 63A 3P+N+G P17 sockets
- 2x 32A 3P+N+G P17 sockets
- 4x 16A

### Power video : 4x160A on cams

- 1x 125A 3P+N+G P17 sockets
- 2x 63A 3P+N+G P17 sockets
- 2x 32A 3P+N+G P17 sockets
- 4x 16A

### Power hoist and rigging : 4x 125A on cams

- 1x 125A 3P+N+G P17 sockets
- 2x 63A 3P+N+G P17 sockets
- 2x 32A 3P+N+G P17 sockets

## BACKSTAGE FACILITIES

- 2 x Promoter offices
- WC, Stage Manager's Office, Security Control, local crew dressing room
- 4 x Dressing rooms (2 large and 2 small)
- Laundry room equipped with machines

## CATERING FACILITIES

Kitchen and dining room area are situated in the annex building closed to the main with seating for up to 50 people.

- 2x Large upright fridge (1 with glass door)
- 4x ring electrical hob
- 1x large extractor
- 2x stainless steel workbench
- 1x large industrial double side sink
- 1x micro-wave
- 1x ventilated baking oven (up to 300°C)
- 1x front loading dishwasher



## CONTACTS

**DAMIEN LE CUNFF**

Administrative manager

[damien.lecunff@leliberte.fr](mailto:damien.lecunff@leliberte.fr)

**KERAN OCTOBRE**

Technical manager

[keran.octobre@leliberte.fr](mailto:keran.octobre@leliberte.fr)

## Le Liberté

1, esplanade Charles de Gaulle

35000 RENNES

**T 02 99 85 84 84**

[www.leliberte.fr](http://www.leliberte.fr)